



# MONITORING REPORT – POINT 4

**Date of report:** 19 November 2024

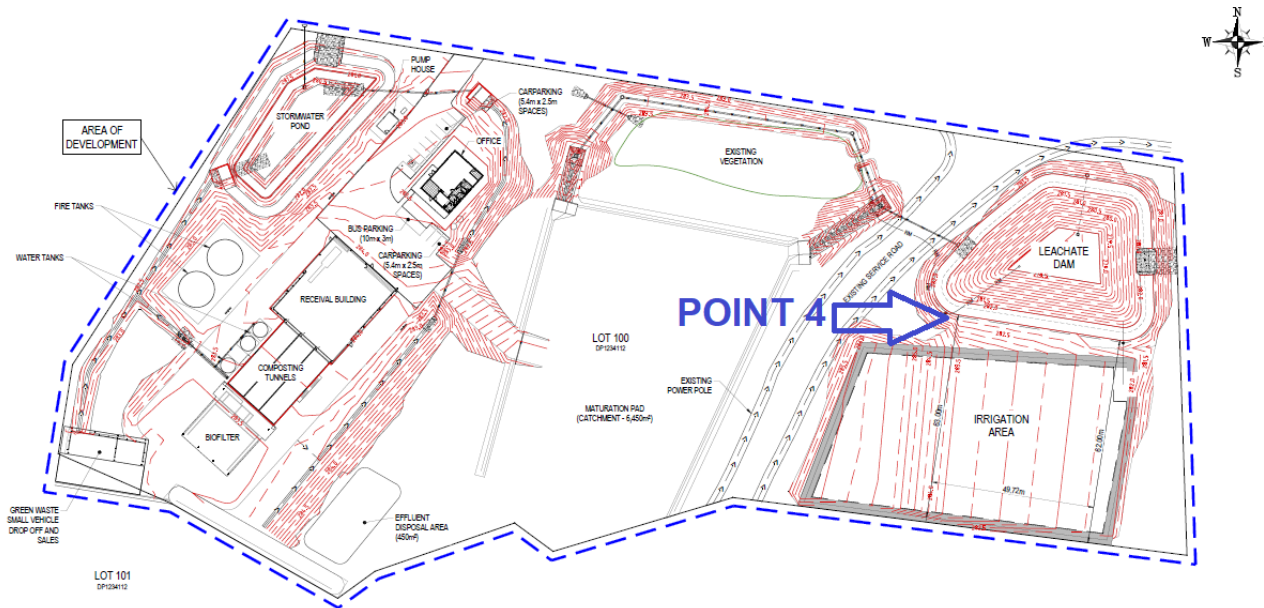
**Item Detail**  
 Facility: Dubbo Regional Organics Processing Plant  
 EPL: 20998  
 Entity: J.R. & E.G. Richards (NSW) Pty Ltd  
 Address: Cooba Rd, Dubbo, NSW 2830  
 Reporting Period: 1 Nov 2023 to 31 Oct 2024  
 Monitoring Point: 4  
 Monitoring Point Description: Discharge to Utilisation Area

## SUMMARY

Year	Month	Total Irrigated (kL)	Irrigation Days	Average Volume Irrigated (kL / Day)
2023	Nov	0	0	-
2023	Dec	0	0	-
2024	Jan	0	0	-
2024	Feb	0	0	-
2024	Mar	147	10	14.7
2024	Apr	73	5	14.6
2024	May	170	11	15.5
2024	Jun	0	0	-
2024	Jul	0	0	-
2024	Aug	0	0	-
2024	Sep	48	3	16
2024	Oct	215	11	19.5

## Location of Monitoring Point

The Point 4 monitoring point is the pump meter at the pump shed, at the South-East corner of the Leachate Dam. See map below.



## Key Requirements

### P1. Location of monitoring/discharge points and areas

4	Discharge to utilisation area	Discharge to utilisation area	Discharge from leachate dam to irrigation area shown on map titled "DROPP-Whylandra & Recycling Facility Leachate Dam & Irrigation Area Layout Plan", DRG No. JR2141-10-02, dated 06/21 (EPA reference DOC21/617336-2)
---	-------------------------------	-------------------------------	--

### M7. Requirement to monitor volume or mass

#### POINT 4

Frequency	Unit of Measure	Sampling Method
Daily when wastes discharged	litres per day	By Calculation (volume flow rate or pump capacity multiplied by operating time)

### E1. Special Conditions

E1.5 The maximum amount of irrigation rates for leachate/contact water must not exceed the volumes in the below table:

Note: the above condition is based off 7.5mm irrigation

Volume	Irrigation Dates
20 kL/per day	During winter (June to August)
30 kL/per day	Other months