

FRM-WP-QA-524 Cairncross Material Recovery Facility POLLUTION INCIDENT RESPONSE MANAGEMENT PLAN (PIRMP)

This procedure has been developed to use as a guideline to assist management and personnel in the event of an environmental incident involving the Cairncross Material Recovery Facility (MRF) located at the within the Port Macquarie Hasting Council Cairncross Waste Management Facility 351 Telegraph Point Road, Pembroke. As stated, it is only a guideline and, given the myriad of events that could result in an emergency, it may need to be modified to suit the situation. In the event of an emergency the relevant emergency service responsible to control the situation may implement their own procedures.

1.0 LOCATION

The Material Recovery Facility is located with the boundary of the Cairncross Waste Management Facility 351 Telegraph Point Road, Pembroke. The boundary of the total facility is outlined in Red. JR Richards & Sons MRF is highlighted in Yellow.



2.0 OPERATION OF PROCEDURE

This procedure is to be used in conjunction with the “Emergency Procedures – General Cairncross Material Recovery Facility EMP-Tuncurry MRF V3” document.

3.0 ASSOCIATION PROCEDURES & REFERANCES

This document is to be used in association with the following procedures. References to the relevant sections of these procedures are listed beside the document:

DOCUMENT	REFERANCE
Cairncross Emergency Response Manual	3.5 Environmental Incidents, 4.0 Emergency Wardens, 5.0 Evacuation, 6.0 Emergency Management Equipment, 8.0 Fire, 16.0 Spill Contingency Plan, 18.0 Training & Drills
Environmental Incident Reporting Procedure WP-QA-506	Total document

FRM-WP-QA-524 Great Lakes Material Recovery Facility POLLUTION INCIDENT RESPONSE MANAGEMENT PLAN (PIRMP)

4.0 ASSESSMENT OF RISKS

There are a number of aspects of the MRF operation which have the potential to become an environmental incident. These are listed below:

Fire in Recycling - Likelihood of event: Med

Procedures to manage the control of a fire documented within the “Emergency Procedures – General” document.

Fire in Stockpiles - Likelihood of event: Low

Procedures to manage the control of fires are documented within the “Emergency Procedures – General” document.

Chemical Spillage - Likelihood of event: Low

Procedures to manage the control of spillages are documented within the “Emergency Procedures – General” document.

PRE-EMPTIVE ACTIONS

Recycling

- Recycling is sorted on the day of delivery therefore leaving no product in the MRF removing the likelihood of a fire.
- The MRF is fitted with firefighting hoses and extinguishers which are maintenance in compliance with the Australian Standard

Stockpiles

- Stockpile product is stored in the open environment, away from building and infrastructure preventing the spread of fire.
- The product is compacted during the baling process therefore reducing the likelihood of fire spreading to the interior of the product.
- Firefighting equipment to control and extinguish stockpile fires is available onsite.

Chemical Spillage

- Collected chemicals: The content of recycling MGB’s is monitored during collection by the waste collection vehicle operator through camera within the hopper of the compactor. If the operator believe they may have collected a chemical they will stop and contact their supervisor and the product will be removed therefore reducing the likelihood of chemicals being delivered to the MRF.
- Stored Chemical: All chemicals stored at the MRF are within bunded pallets which will contain 110% of the largest container stored.

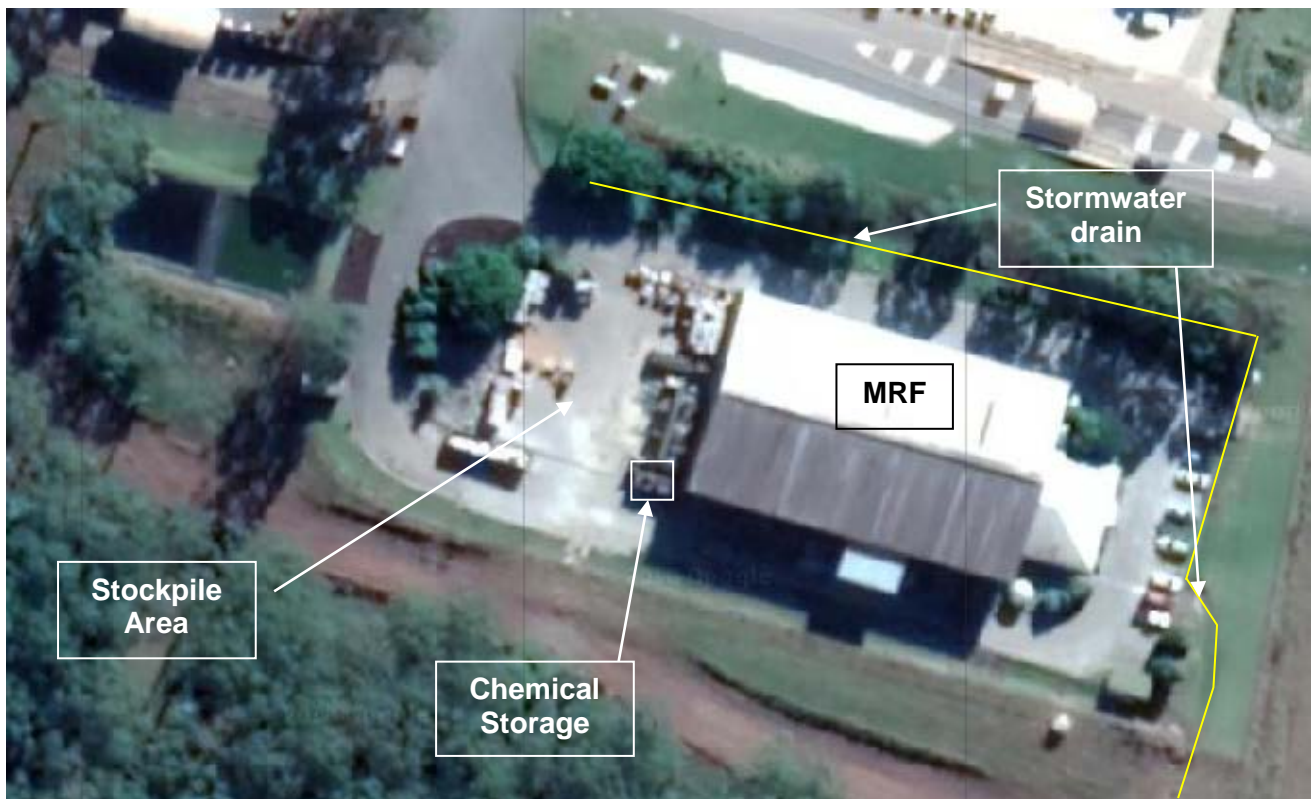
INVENTORY OF HYDROCARBONS AND CHEMICALS

SUBSTANCE	MAXIMUM STORAGE	STORAGE
Hydrocarbons	300ltr	Bunded
Used batteries	10 batteries	Bunded
Used Chemicals	20ltr	Bunded

FRM-WP-QA-524 Great Lakes Material Recovery Facility POLLUTION INCIDENT RESPONSE MANAGEMENT PLAN (PIRMP)

5.0 SITE PLAN

Cairncross Waste Management Facility – Port Macquarie Hastings Council



FRM-WP-QA-524 Great Lakes Material Recovery Facility POLLUTION INCIDENT RESPONSE MANAGEMENT PLAN (PIRMP)

6.0 NOTIFICATION PROTOCOL – SENIOR MANAGEMENT

Once a pollution incident has been determined, Senior Management from Head Office must be advised. Contact names and numbers for these managers are listed below and within the Emergency Contacts List on the company intranet and within Depot Emergency Manual.

Craig Shelton Compliance Manager	Robert Marlow Chief Of Operations – Commercial	Greg Turner Contracts Chief Of Operations – Domestic
02 6555 7007	02 6555 7007	02 6555 7007

7.0 NOTIFICATION PROTOCOL – GOVERNMENT AUTHORITIES

In the event an incident is reportable the contact details for the EPA, WorkCover, NSW Fire & Rescue and Ministry of Health are available in procedure “Environmental Incident Reporting”. Details of contact numbers for local authorities are listed below.

Port Macquarie Hastings Council - 6581 8111	Cairncross Weighbridge Office - 6585 0738
---	---

8.0 NOTIFICATION PROTOCOL – NEIGHBOURS

Cairncross is a fairly isolated site with the closest neighbours being rural properties on Pembroke Road, and the closest town the small community of Telegraph Point, over 10km north on the Pacific Highway. Telegraph Point Public School is the closest school and the closest hospital, fire station and ambulance service are located at Wauchope.

In the event of an incident the decision to notify neighbours and local communities will be made by the Regional Manager, with advice from local emergency authorities.

9.0 TRAINING

All employees are to be trained in this procedure and the site emergency procedures to ensure wherever possible environmental incidents are controlled and managed within the licenced area. Training records shall be maintained by the Regional Manager

10.0 TESTING OF THE PIRMP

This plan is to be tested annually in June by the Regional Manager and site employees. The method of testing shall be on a rotation of desk top review and simulation with desk top review being carried out during the odd year.

Test Date	Method of Testing	Scenario	Person Conducting the Test

FRM-WP-QA-529 Cairncross Material Recovery Facility POLLUTION INCIDENT RESPONSE MANAGEMENT PLAN (PIRMP)

11.0 NOTIFICATION FLOW CHART

